



# Duck & Waffle

Event Kit







Welcoming guests 24/7, Duck & Waffle London keeps pace with a city that's always on the move. Featuring the highest private dining room in the country, Duck & Waffle offers flexibility to host an array of events, from intimate dinners and corporate meetings to exclusive parties and celebrations for up to 250 guests.

Our award-winning events team will guide you through the planning process to ensure an unforgettable celebration for both you and your guests.



## THE VENUE

Duck & Waffle is located on the top floor of the Heron Tower at 110 Bishopsgate, 40 stories above the City. The express lifts travel at 5 metres per second, bringing you and your guests to the summit in less than a minute.

Designed by acclaimed architects Cetra Ruddy, the restaurant features wraparound floor-to-ceiling windows that overlook Olympic Park, The Tower of London, and the Gherkin. Interior highlights include a theatrical open kitchen, private dining room, and 'inside-out' bar where you and your guests can interact with our bar team as they create D&W's award-winning libations. With its sociable ambience, unparalleled views, artful interpretations of regional cuisine and innovative design, Duck & Waffle embodies a truly unique experience!



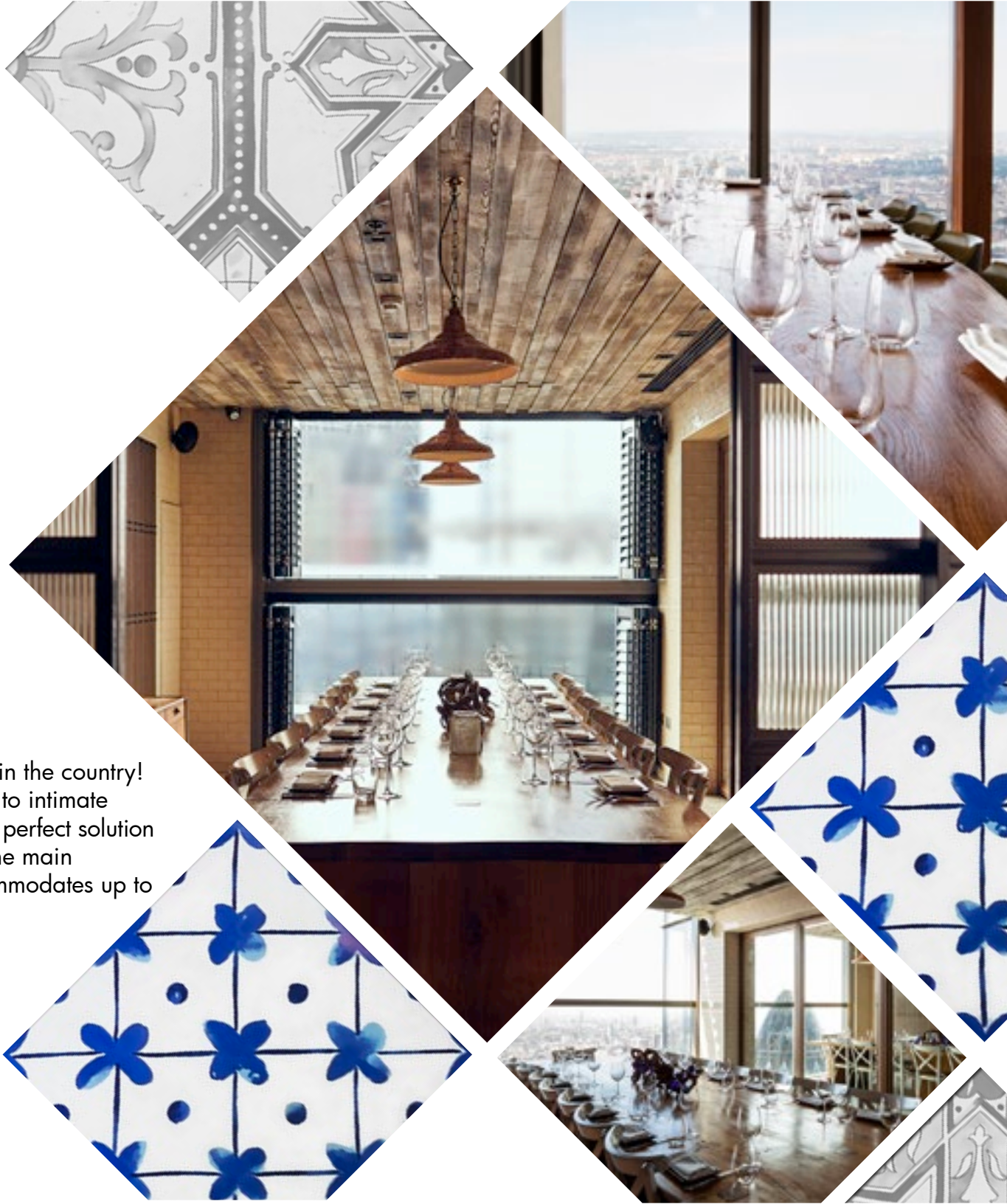
# EVENT SPACES





## PRIVATE DINING ROOM

Experience the highest private dining room in the country! From sunrise breakfasts and lunch meetings to intimate dinner parties, our Private Dining Room is a perfect solution for your bespoke celebration. Adjacent to the main restaurant and bar, this unique space accommodates up to 16 guests for a seated event.







## PRIVATE PARTIES AND EXCLUSIVE HIRE

Duck & Waffle offers a unique blend of breathtaking London views with a critically acclaimed dining experience. The venue has garnered a reputation for hosting some of London's most exclusive events, premieres and after parties. Comprising a restaurant space, bar area and a private dining room, Duck & Waffle London's overall capacity reaches 250 guests.

120 seated | 250 standing





## ENTERTAINMENT & PRODUCTION

Duck & Waffle is the perfect venue for both corporate and special occasions alike. Our dedicated events team will work closely with you to design a bespoke event that best suits your needs and exceeds your expectations. Drawing from their wealth of knowledge working for some of the capital's most prolific venues, our team will enhance your event from sourcing and managing entertainment, production and AV, to selecting fresh flowers and festive décor, creating an unforgettable experience for you and your guests.





## CUISINE

Duck & Waffle draws inspiration from the market's freshest offerings to create a menu of memorable flavors. Dishes designed for sampling and sharing include the Spicy Ox Cheek Doughnut with apricot jam and smoked paprika sugar; the signature Duck & Waffle with crispy leg confit, fried duck egg and mustard maple syrup; and Whole Roasted Chicken with ratte potatoes, wild mushrooms and truffle. Complementing the menu are inventive desserts, including Torrejas with maple caramel apples; and Chocolate Fondant.

For standing events and receptions, our chefs have created a Canapé Menu, featuring miniature versions of our signature dishes. The offering complements the style of Duck & Waffle, whilst catering for up to 250 guests.







## AWARD-WINNING BAR PROGRAMME

Duck & Waffle is all about culinary theatre, showcasing ingredients as an art and delivering cocktails in an unexpected way. The beverage team collaborates with culinary to produce distinctive flavour combinations on an ever-changing cocktail menu. The opening list features classic cocktails crafted with an iconoclastic approach, including the Roasted Cosmo with orange liqueur, a bone marrow infusion and cranberry conserve lime, and the G&T featuring gin, tonic and yuzu.



# Summary

## Contact

Events

E: [londonevents@duckandwaffle.com](mailto:londonevents@duckandwaffle.com)  
T: 0203 640 7340

Private Dining & Group Bookings

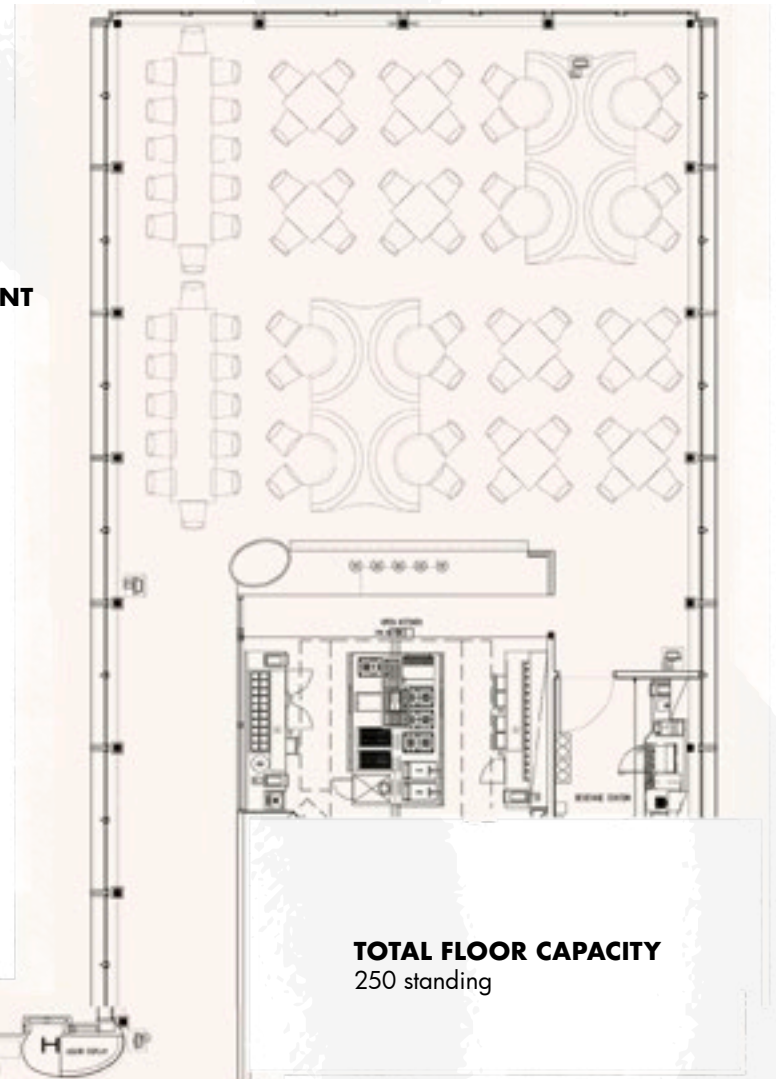
E: [londongroups@duckandwaffle.com](mailto:londongroups@duckandwaffle.com)  
T: 0203 640 7314

## Address

110 Bishopsgate, London, EC2N 4AY

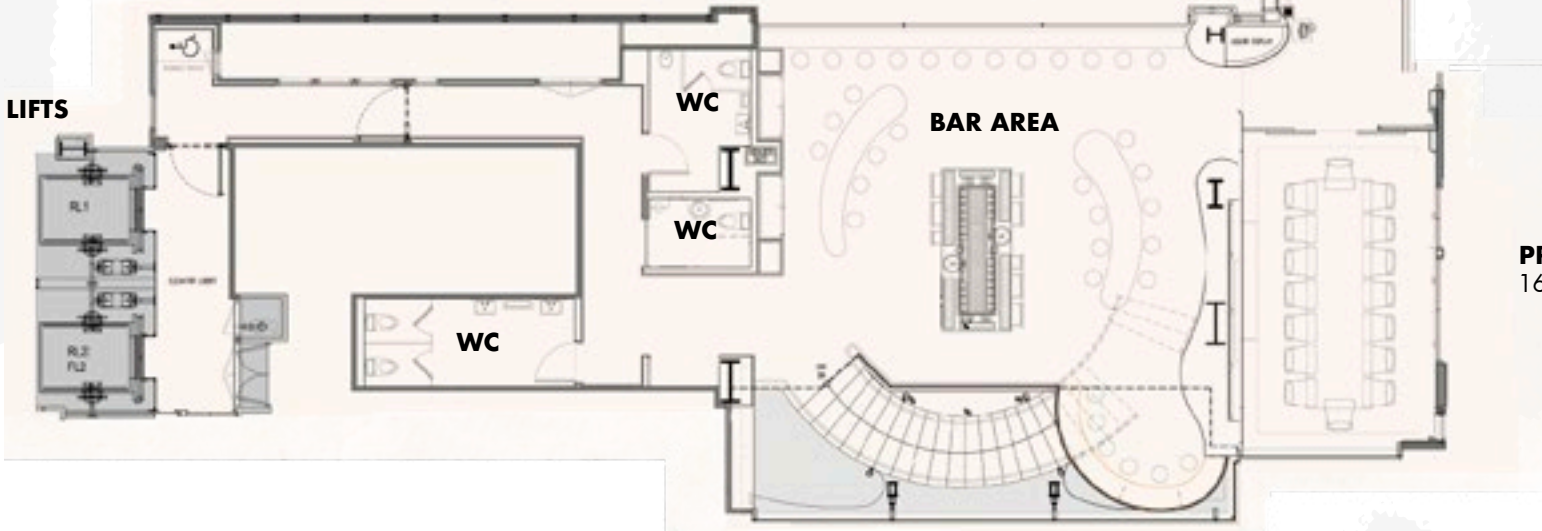
### MAIN RESTAURANT

120 seated  
250 standing



**TOTAL FLOOR CAPACITY**  
250 standing

### LIFTS



**PRIVATE DINING ROOM**  
16 seated





Thank You